



ERME Office:  
ASPECTA BV  
Argon 37a  
4751XC Oud Gastel  
The Netherlands  
Tel: +31 (0) 88 1662500  
info@aspectaflooring.com

USA Office:  
ASPECTA US  
15 Oakwood Ave.  
Norwalk, CT 06850  
USA  
Tel +01 (855) 4007732  
info@aspectaflooring.com

APAC Office:  
ASPECTA APAC P/L C/- BDO  
Level 14, 140 William St.  
Melbourne, 3000. Vic  
Australia  
Tel: +61 (0) 41 2368067  
info@aspectaflooring.com

ISOCORE TECHNOLOGY®  
STRONG INSIDE, BEAUTIFUL OUT.

Look under the surface of a stunning ASPECTA® TEN floor and you'll find the perfect backbone.

ISOCORE Technology® is made with extruded closed-cell vinyl construction so it's strong and rigid, yet incredibly light. This makes ASPECTA® TEN highly durable, easy to install and 100% Waterproof.



## ASPECTA® TEN

A NEW DIMENSION IN FLOORING

Get ready to discover ASPECTA® TEN. The result of four years of ground-breaking research and development, ASPECTA® TEN consists of a 0.118"/3mm LVT applied on an extruded vinyl structural core. We have combined a number of cutting edge technologies to create a strong and beautiful flooring system that matches the look of natural textures, with the durability and comfort only LVT provides.

## INTRODUCING ISOCORE

FLAWLESS TECHNOLOGY FOR BEAUTIFUL DESIGNS

ISOCORE Technology® forms the closed cell foamed vinyl structural core of ASPECTA® TEN flooring. It's what makes ASPECTA® TEN so brilliantly unique.

- ISOCORE Technology® is durable and dimensionally stable - ideal for the current trend in longer planks and tiles.
- It is 100% waterproof, another reason why ASPECTA® TEN is the perfect solution for the commercial flooring sector.
- Although strong, ASPECTA® TEN is amazingly light so it's incredibly easy to transport and install.

## EFFORTLESS INSTALLATION

STUNNING RESULTS

Thanks to ASPECTA® TEN's factory applied PE underlayment, it can be laid directly onto existing tiles and flooring.

- ASPECTA® TEN's thick, polyethylene foam underlayment, combined with its revolutionary ISOCORE Technology®, allows it to be installed over substrates with minor imperfections that would typically telegraph through a traditional, glue-down LVT floor.
- This innovative foam underlay works hard to eliminate excessive noise, whilst creating a comfortable flooring underfoot. This is perfect for busy commercial environments where noise needs to be kept to a minimum and comfort is crucial.
- ASPECTA® TEN's size range makes installation even quicker for large commercial surface areas. It is available in 17.64" x 35.67"/448mm x 906mm tiles or 8.66" x 59.45"/220mm x 1510mm long planks. Our range now also includes XXL planks which measure 8.62" x 71.61"/219mm x 1819mm.

## ULTRA-FRESH

ENHANCED FLOORING PROTECTION

Ultra-Fresh is a pioneering technology that is added to both the top and bottom layer of ASPECTA® TEN flooring. It inhibits the growth of odor and stain-causing mold and mildew.



### 1 CERAMIC BEAD OVERLAY TREATED WITH ULTRA-FRESH

Microscopic ceramic particles suspended in a UV cured urethane coating for superior wear and stain resistance and easy care and maintenance. Ultra-Fresh antimicrobial additive inhibits the growth of odor- and stain-causing mold and mildew.

### 2 CLEAR VINYL WEAR LAYER

A 28mil (0.7mm) transparent vinyl wear layer provides protection against scuffs and abrasions, even in demanding commercial environments.

### 3 HIGH-RESOLUTION PRINTED DECORATIVE FILM

High-resolution printed film delivers the beauty and realism of natural wood, stone, masonry and leather with vivid clarity.

### 4 0.118"/3MM SOLID VINYL TOP LAYER

Multiple layers of solid virgin vinyl enhance durability and facilitate authentic embossing.

### 5 ISOCORE TECHNOLOGY®

A 0.197"/5mm thick highly engineered closed-cell extruded vinyl structural core. ISOCORE Technology® is 100% waterproof, rigid, light, strong and dimensionally stable.

### 6 ANGLE-LOCKING TECHNOLOGY

Angle-locking technology is profiled on long-edges of planks and tiles to facilitate a fast, floating-floor installation.

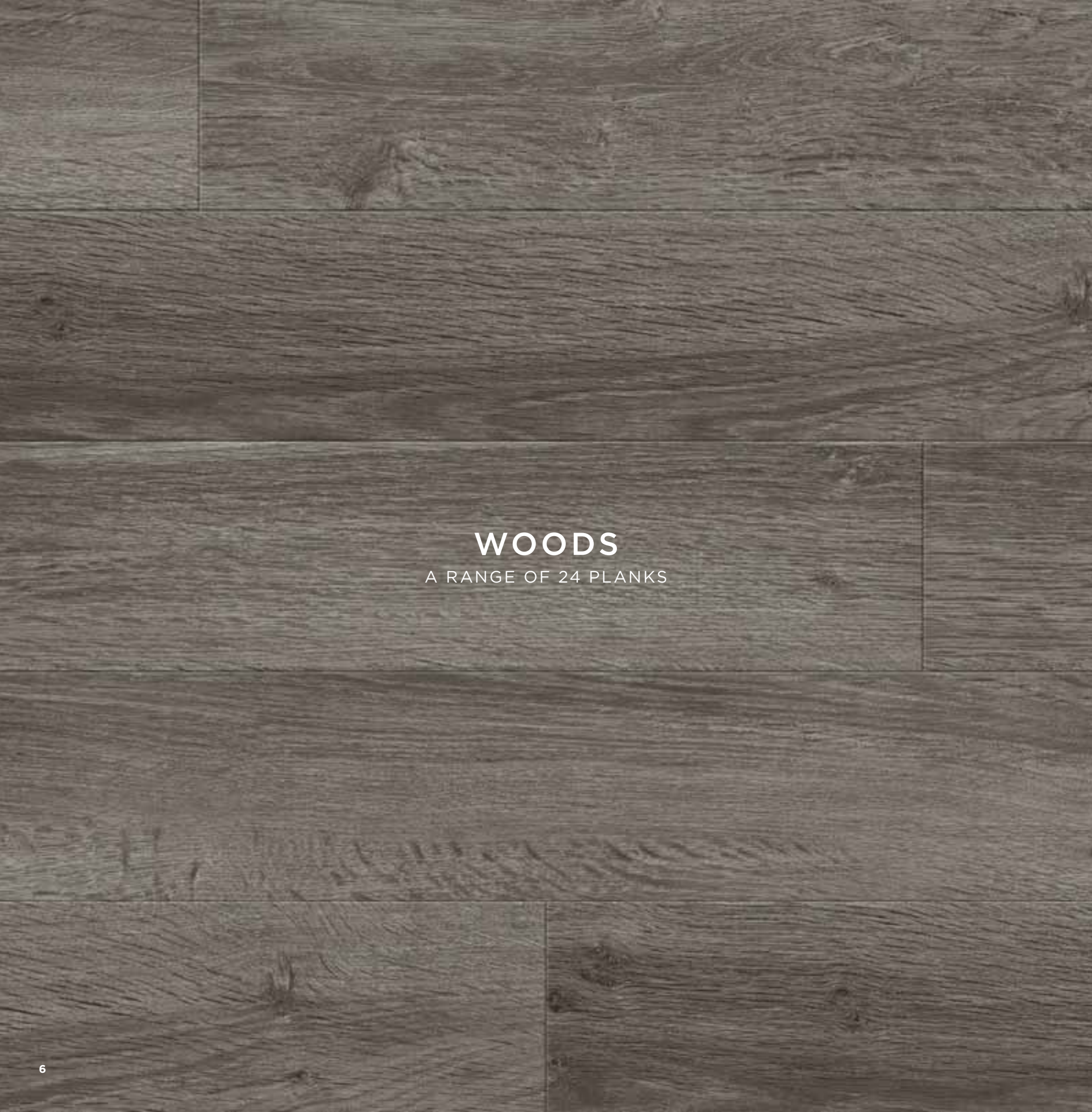
### 7 DROPLock 100™ SYSTEM TECHNOLOGY

End joints utilize DropLock 100™ system technology to facilitate a fold-down locking connection that dramatically expedites installation speed and aligns the top-surfaces of adjoining planks and tiles.

### 8 INTEGRAL SOUND MITIGATING UNDERLAYMENT

A pre-attached underlayment that minimizes both reflected and transmitted sound, is shock-absorbing, provides warmth and comfort underfoot and helps further conceal subfloor imperfections.





## WOODS

A RANGE OF 24 PLANKS



## STONE, MASONRY & LEATHER

A RANGE OF 10 TILES



# WOODS

ASPECTA® TEN marks a whole new level of authenticity in wood grain design.

8.66" x 59.45"/220mm x 1510mm long planks address the demand for larger plank and print widths. We have also introduced an XXL plank range which is available in the larger size of 8.62" x 71.61"/219mm x 1819mm. All our planks feature in-register embossing textures that really capture the intricate figuring and grain of reclaimed or repurposed wood.

ASPECTA® TEN designs come in a carefully curated selection of colors, offering everything from rich wood tones to dramatic darks and striking neutral Greys. Whether hospitality, retail or office space, these new wood finishes have the flair to bring any interior together.







**BRINDLE OAK**

A time-worn weathered oak, the soft grain and subtle colors of Brindle Oak give any room a feeling of instant comfort and familiarity. It creates a warm, welcoming mood that can unify a space without overpowering it.

Size: 8.66" x 59.45"/220mm x 1510mm  
Edge Detail: Micro Bevel  
Emboss: In-Register



**BRINDLE OAK - COLOR: BURNT SAND - PATTERN# 0412312**



**BRINDLE OAK - COLOR: SUN DRIED - PATTERN# 0412318**



**BRINDLE OAK - COLOR: SAND DRIFT - PATTERN# 0412316**



With its refined, multi-layered stain and hand-rubbed oak, Tally Oak lends an understated elegance to any space. The distinctive grain scale and eye-catching figuring carries through all seven colors, offering a full complement of choices.

Size: 8.66" x 59.45"/220mm x 1510mm  
Edge Detail: Micro Bevel  
Emboss: In-Register



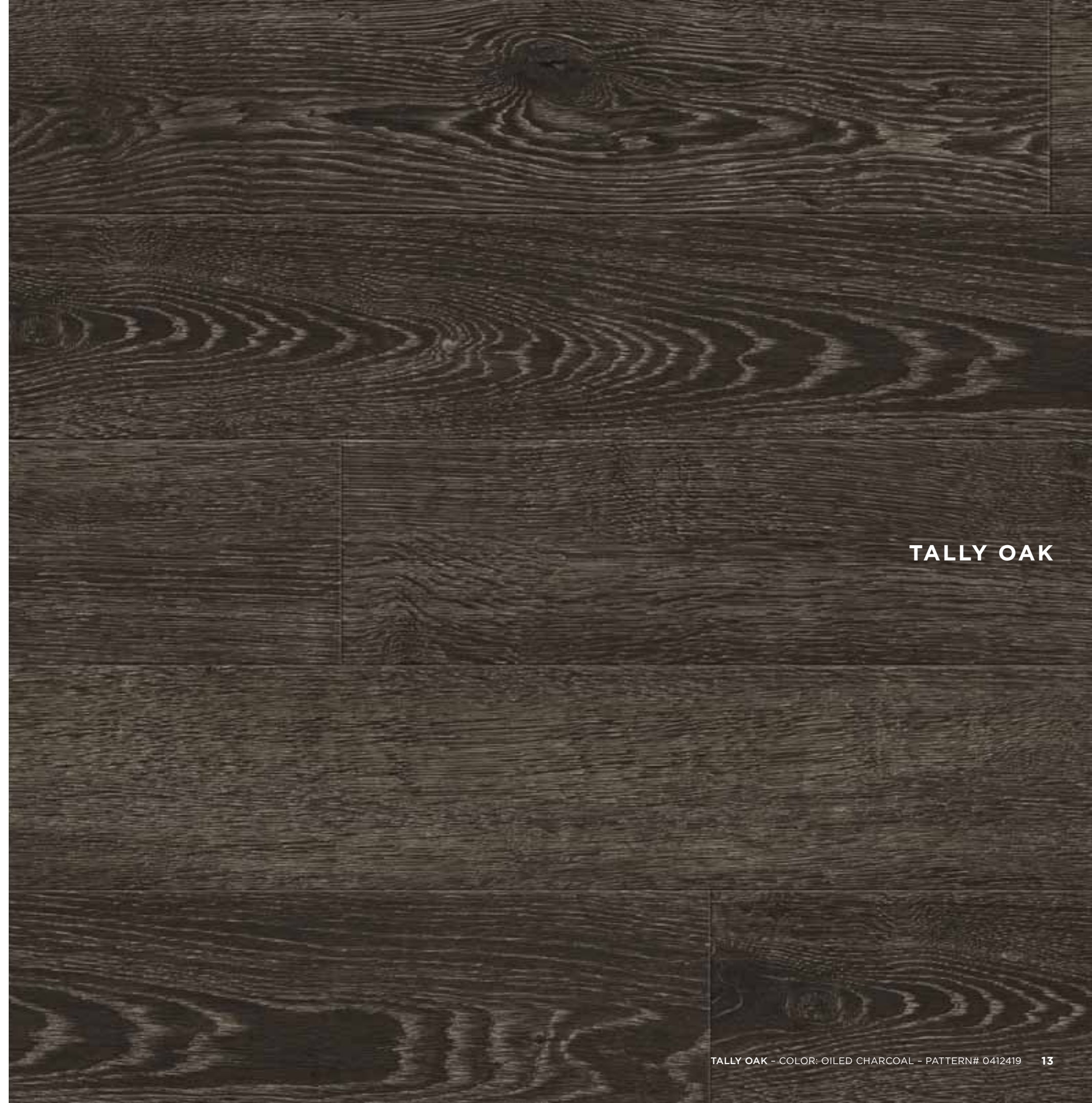
TALLY OAK - COLOR: GOOD BROWN - PATTERN# 0412418



TALLY OAK - COLOR: BURNISHED GOLD - PATTERN# 0412142



TALLY OAK - COLOR: LIGHT GREY - PATTERN# 0412416



TALLY OAK





TALLY OAK - COLOR: SMOKE BROWN - PATTERN# 0412147



TALLY OAK - COLOR: BROWN - PATTERN# 0412144



TALLY OAK - COLOR: TAN - PATTERN# 0412141



Tanley Hall harnesses the character of reclaimed wood in a sophisticated, unfussy style. Strong cathedral figuring along each plank combines with a hint of the 'cross fire' effect you'd see in a rift cut library panel to give it real personality.

Size: 8.66" x 59.45"/220mm x 1510mm  
Edge Detail: Micro Bevel  
Emboss: In-Register



TANLEY HALL - COLOR: BURNT SIENNA - PATTERN# 0414715



TANLEY HALL - COLOR: SHALE - PATTERN# 0414717



TANLEY HALL - COLOR: RUSTIN - PATTERN# 0414711



TANLEY HALL - COLOR: COCO - PATTERN# 0414710

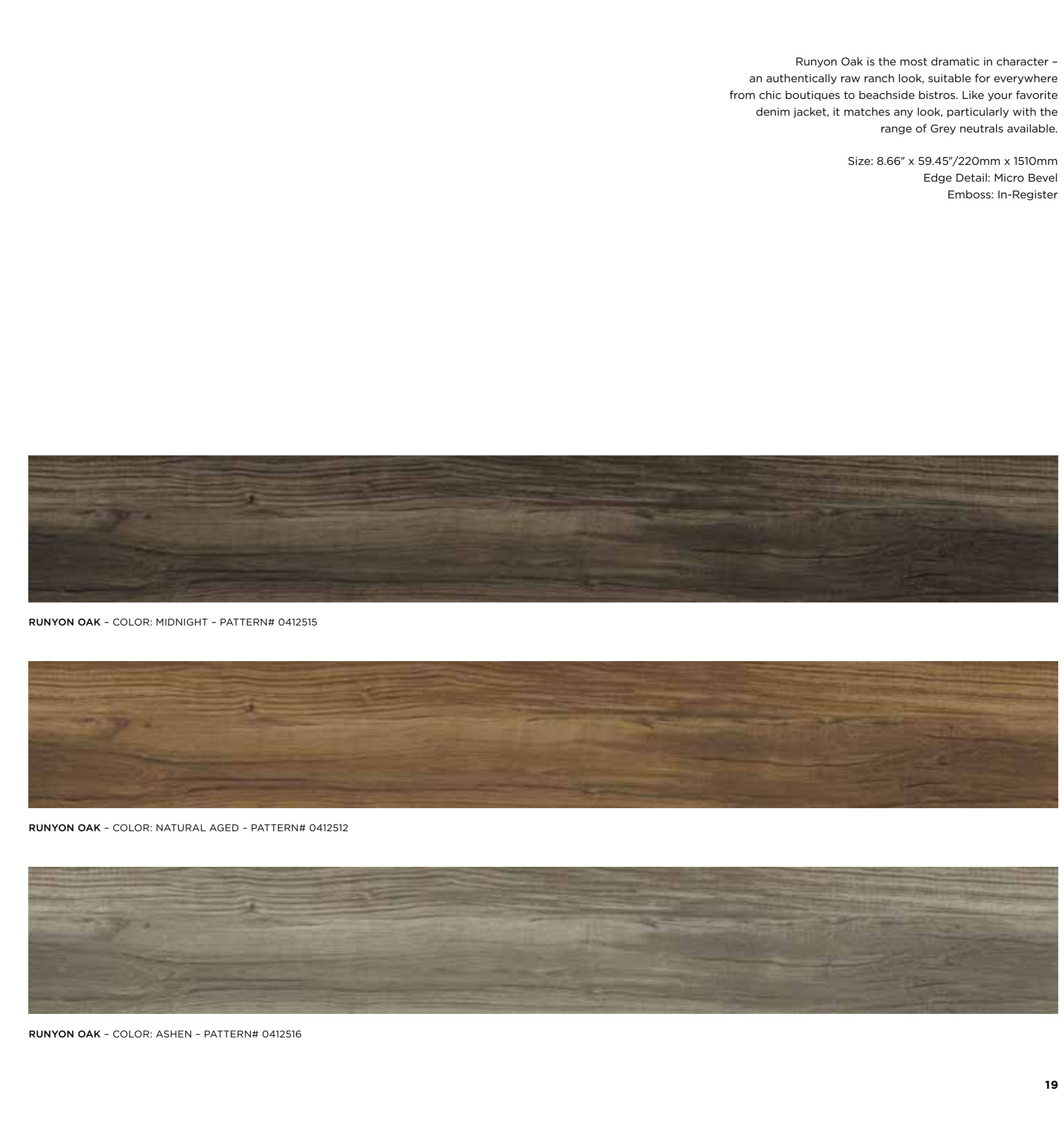


TANLEY HALL





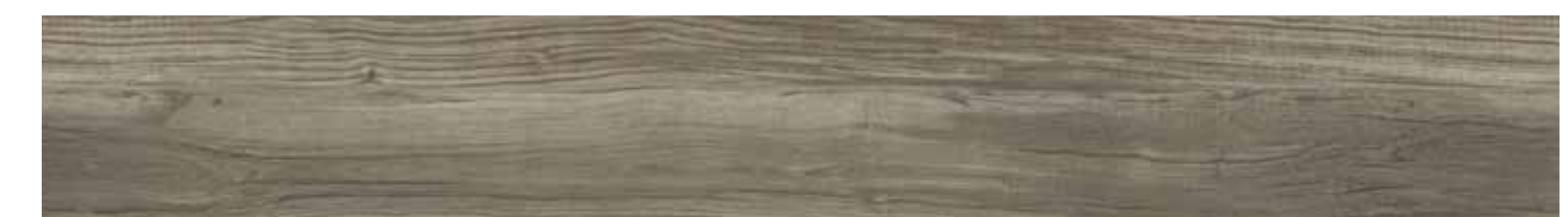
RUNYON OAK



RUNYON OAK - COLOR: MIDNIGHT - PATTERN# 0412515



RUNYON OAK - COLOR: NATURAL AGED - PATTERN# 0412512

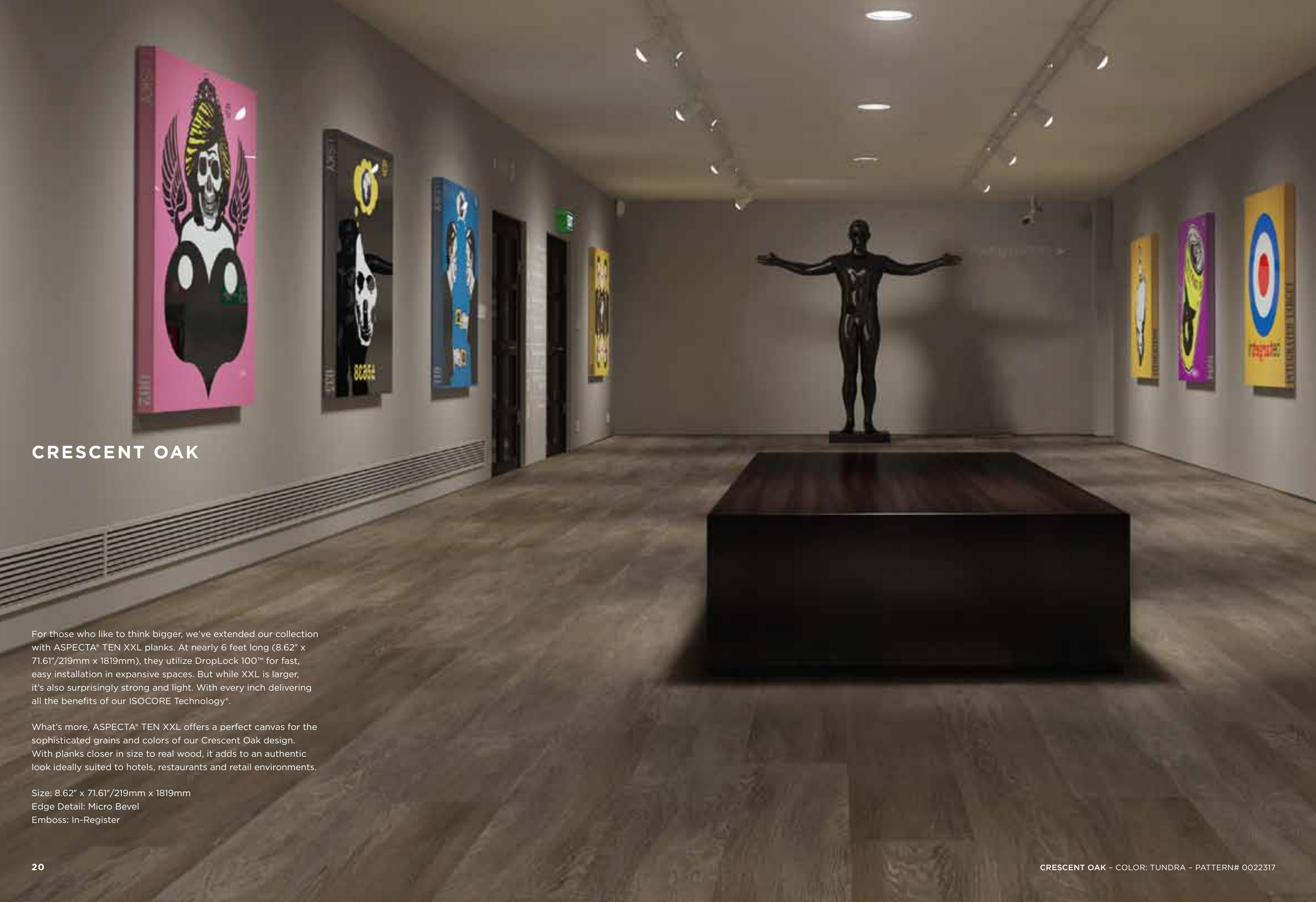


RUNYON OAK - COLOR: ASHEN - PATTERN# 0412516

Runyon Oak is the most dramatic in character - an authentically raw ranch look, suitable for everywhere from chic boutiques to beachside bistros. Like your favorite denim jacket, it matches any look, particularly with the range of Grey neutrals available.

Size: 8.66" x 59.45"/220mm x 1510mm  
Edge Detail: Micro Bevel  
Emboss: In-Register





**CRESCENT OAK**

For those who like to think bigger, we've extended our collection with ASPECTA® TEN XXL planks. At nearly 6 feet long (8.62" x 71.61"/219mm x 1819mm), they utilize DropLock 100™ for fast, easy installation in expansive spaces. But while XXL is larger, it's also surprisingly strong and light. With every inch delivering all the benefits of our ISOCORE Technology®.

What's more, ASPECTA® TEN XXL offers a perfect canvas for the sophisticated grains and colors of our Crescent Oak design. With planks closer in size to real wood, it adds to an authentic look ideally suited to hotels, restaurants and retail environments.

Size: 8.62" x 71.61"/219mm x 1819mm  
 Edge Detail: Micro Bevel  
 Emboss: In-Register



CRESCENT OAK - COLOR: NORTH FACE - PATTERN# 0022312



CRESCENT OAK - COLOR: TUNDRA - PATTERN# 0022317



CRESCENT OAK - COLOR: CIRRUS - PATTERN# 0022314



CRESCENT OAK - COLOR: SOUTH FACE - PATTERN# 0022316



# WOODS

ASPECTA® TEN designs come in a carefully curated selection of colors, offering everything from rich wood tones to dramatic darks and striking neutral Greys – all complemented by an In-Register emboss. The designs measure 8.66" x 59.45"/220mm x 1510mm; while our XXL planks are longer at 8.62" x 71.61"/219mm x 1819mm. Whether hospitality, retail or office space, these new wood finishes have the flair to bring any interior together.



**CRESCENT OAK** - COLOR: SOUTH FACE - PATTERN# 0022316



**TALLY OAK** - COLOR: LIGHT GREY - PATTERN# 0412416



**BRINDLE OAK** - COLOR: SAND DRIFT - PATTERN# 0412316



**TALLY OAK** - COLOR: BURNISHED GOLD - PATTERN# 0412142



**CRESCENT OAK** - COLOR: CIRRUS - PATTERN# 0022314



**CRESCENT OAK** - COLOR: TUNDRA - PATTERN# 0022317



**TANLEY HALL** - COLOR: WEATHERED OCHRE - PATTERN# 0414718



**TANLEY HALL** - COLOR: RUSTIN - PATTERN# 0414711



**RUNYON OAK** - COLOR: ASHEN - PATTERN# 0412516



**TANLEY HALL** - COLOR: SHALE - PATTERN# 0414717



**CRESCENT OAK** - COLOR: NORTH FACE - PATTERN# 0022312



**BRINDLE OAK** - COLOR: SUN DRIED - PATTERN# 0412318



**TALLY OAK** - COLOR: TAN - PATTERN# 0412141



**BRINDLE OAK** - COLOR: BURNT SAND - PATTERN# 0412312



**TANLEY HALL** - COLOR: COCO - PATTERN# 0414710



**RUNYON OAK** - COLOR: NATURAL AGED - PATTERN# 0412512



**RUNYON OAK** - COLOR: GREIGE - PATTERN# 0412514



**BRINDLE OAK** - COLOR: EVENING SMOKE - PATTERN# 0412319



**TALLY OAK** - COLOR: BROWN - PATTERN# 0412144



**TALLY OAK** - COLOR: GOOD BROWN - PATTERN# 0412418



**RUNYON OAK** - COLOR: MIDNIGHT - PATTERN# 0412515



**TALLY OAK** - COLOR: OILED CHARCOAL - PATTERN# 0412419



**TALLY OAK** - COLOR: SMOKE BROWN - PATTERN# 0412147



**TANLEY HALL** - COLOR: BURNT SIENNA - PATTERN# 0414715





## STONE, MASONRY & LEATHER

For the ASPECTA® TEN stone range we wanted a suite of color and textural choices varied enough to complement your vision, whatever the project.

Drawing inspiration from unexpected areas, our three tile designs measure 17.64" x 35.67"/448mm x 906mm, combine the very latest innovations in production with realistic embossing to offer something truly unique. Something that not only enhances the appeal of your environment, but is designed to endure and impress for many years to come.





FULTON HYDE

Fulton Hyde delivers a strikingly unique leather patina in two rich tones. Intricate rivulets of wear cracks tell the story of age worn proudly, a well-loved item whose comfort-folds and blemishes are only enhanced by time.

Size: 17.64" x 35.67"/448mm x 906mm  
Edge Detail: Micro Bevel  
Emboss: Calf Skin



FULTON HYDE - COLOR: BURNT CHILI - PATTERN# 0643713



FULTON HYDE - COLOR: BURNT CARAMEL - PATTERN# 0643712



A deceptively rich concrete detail, Urban Grid can enhance most design approaches, offering a versatile, contemporary dimension. The scale of this concrete patterning and the color range provide an expansive foil to any designer.

Size: 17.64" x 35.67"/448mm x 906mm  
Edge Detail: Micro Bevel  
Emboss: Honed Stone



URBAN GRID - COLOR: PRECAST GREY - PATTERN# 0661215



URBAN GRID - COLOR: ARCTIC IVORY - PATTERN# 0661212



URBAN GRID - COLOR: DARK GRAPHITE - PATTERN# 0661214



URBAN GRID - COLOR: AGED SLATE - PATTERN# 0661213



URBAN GRID





**CORNETO**

A clean abstracted Corneto, this stone draws inspiration from a metal so wonderfully corroded by the decades that, once translated into a design, feels so organic it's hard to believe its origins are not in nature.

Size: 17.64" x 35.67"/448mm x 906mm  
Edge Detail: Micro Bevel  
Emboss: Coral



**CORNETO** - COLOR: CAMBRIAN - PATTERN# 06441109



**CORNETO** - COLOR: CLOUD - PATTERN# 06441104



**CORNETO** - COLOR: SHALE GREY - PATTERN# 06441108



**CORNETO** - COLOR: ECRU - PATTERN# 06441105



# STONE, MASONRY & LEATHER

Drawing inspiration from unexpected areas, our three tile designs measure 17.64" x 35.67"/448mm x 906mm and combine the very latest innovations in production. The designs feature realistic Calf Skin, Coral and Honed Stone embossings, so as to offer something truly unique. Something that not only enhances the appeal of your environment, but is designed to endure and impress for many years to come.



URBAN GRID - COLOR: ARCTIC IVORY - PATTERN# 0661212



URBAN GRID - COLOR: PRECAST GREY - PATTERN# 0661215



CORNETO - COLOR: CLOUD - PATTERN# 06441104



CORNETO - COLOR: ECRU - PATTERN# 06441105



URBAN GRID - COLOR: AGED SLATE - PATTERN# 0661213



URBAN GRID - COLOR: DARK GRAPHITE - PATTERN# 0661214



CORNETO - COLOR: SHALE GREY - PATTERN# 06441108



CORNETO - COLOR: CAMBRIAN - PATTERN# 06441109



FULTON HYDE - COLOR: BURNT CHILI - PATTERN# 0643713

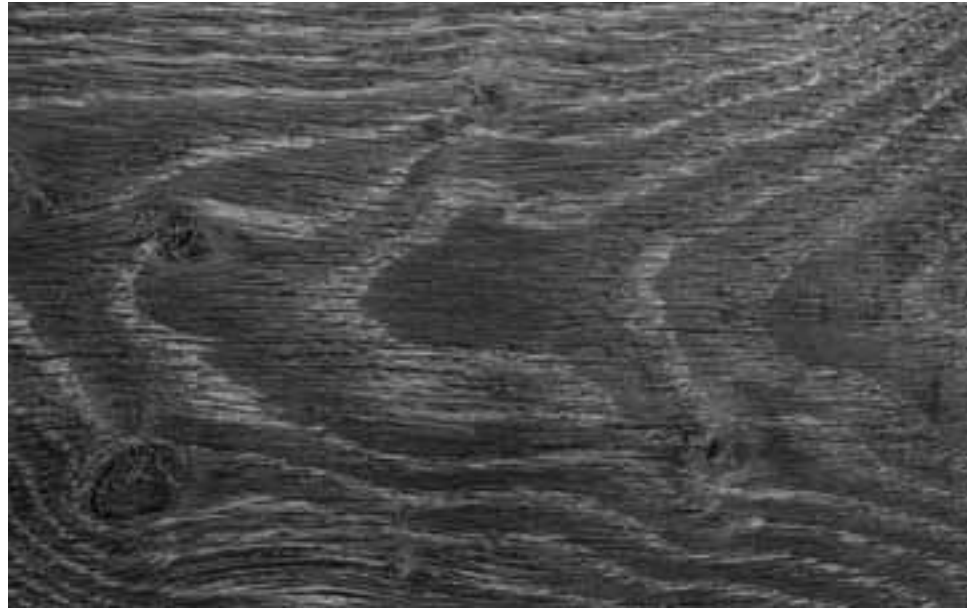


FULTON HYDE - COLOR: BURNT CARAMEL - PATTERN# 0643712



# EMBOSS

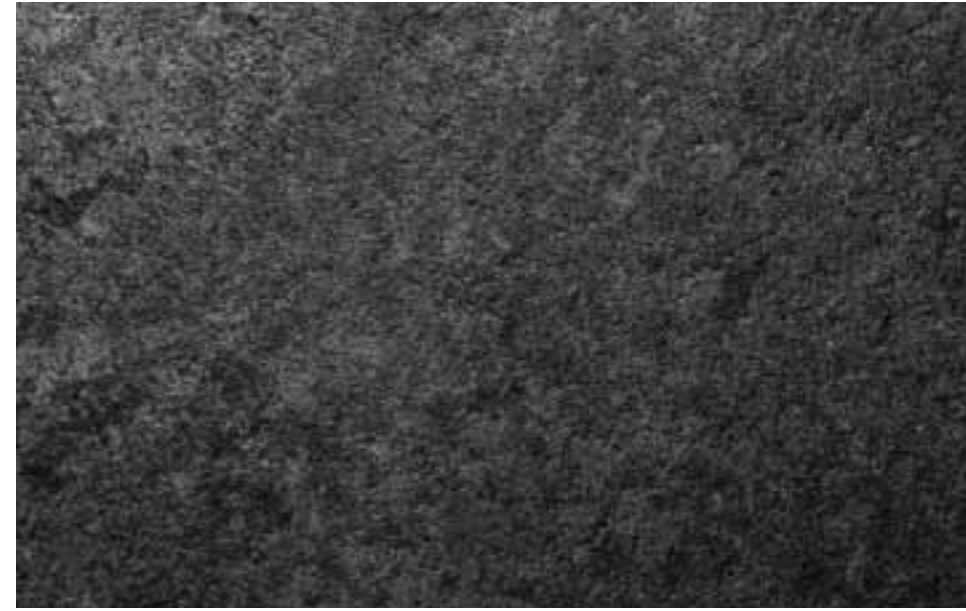
Discover ASPECTA® TEN's stunning collection of in-register wood embosses. The ASPECTA® TEN Tile boasts a range of unique embossing techniques: Honed Stone, Calf Skin and Coral.



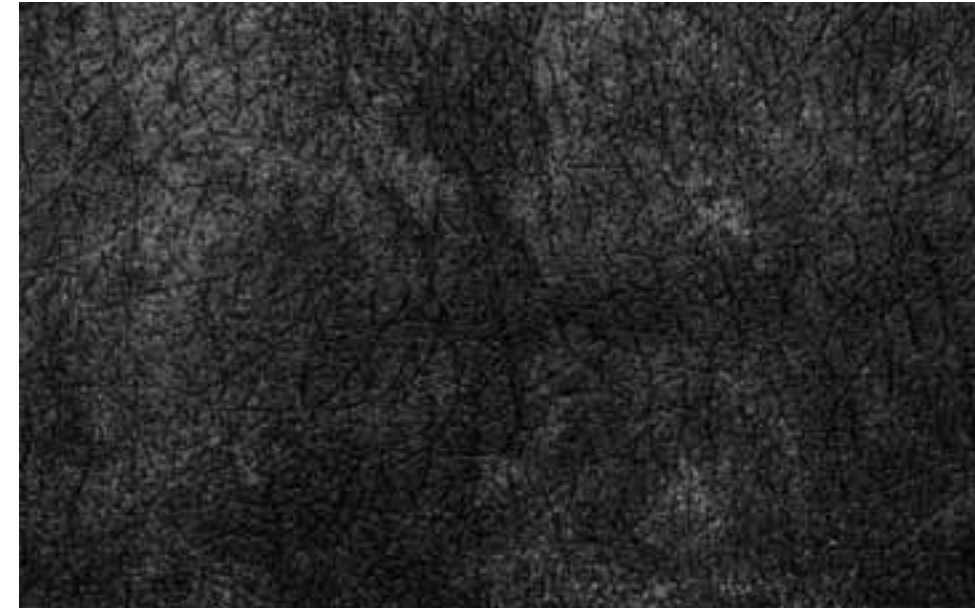
**TALLY OAK** - A classic white oak that has been wire brushed, then hand rubbed with tong oil and colored bees wax. The embossing was created to enhance the rich graphic grain pattern of the wood.



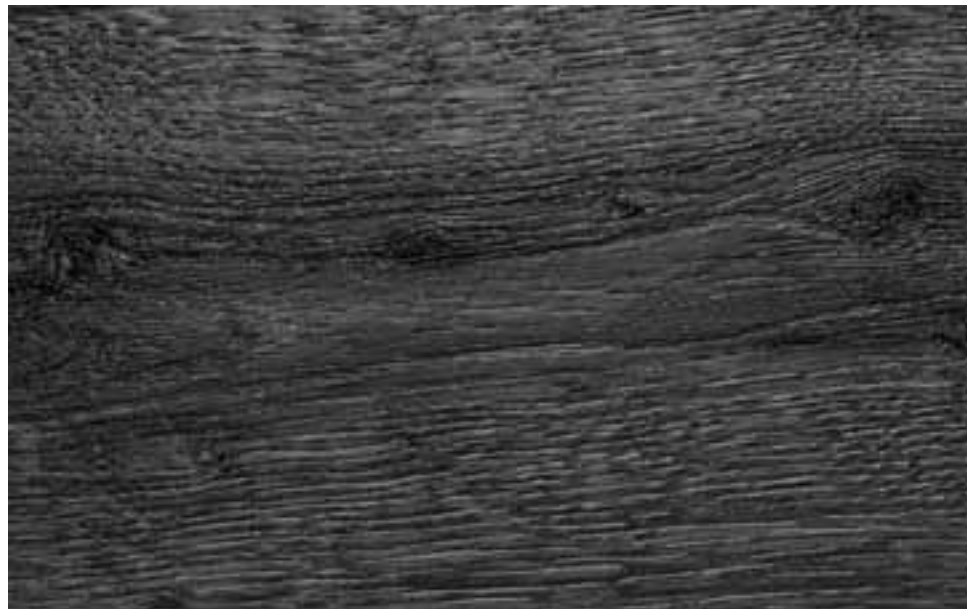
**TANLEY OAK** - A traditional oak look with even graining and small, tight cathedrals. The embossing brings out the tried and true character of this design.



**URBAN GRID** - Urban Grid uses Honed Stone embossing, which is a smooth all-over texture that gives a simple yet elegant surface with a soft lustre.



**FULTON HYDE** - The Calf Skin embossing of this design adds an overall texture without being overpowering. It delivers a distinct two-toned leather patina, with cracks and wear that only get better with age.



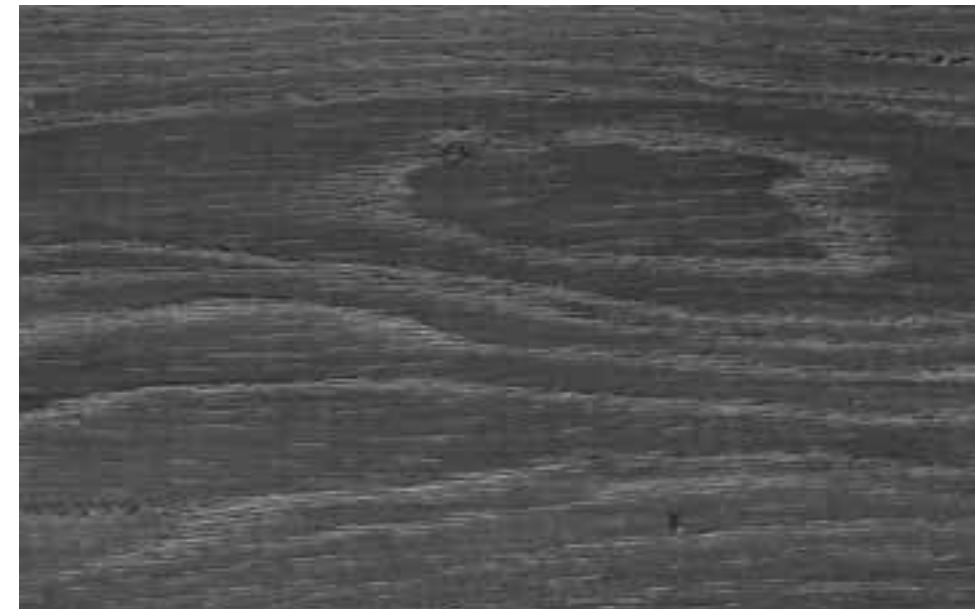
**BRINDLE OAK** - Inspired by the mature oak planks found on an old spring house in Wyoming, this embossing captures the fine lines of the wood that years of exposure to the elements create.



**RUNYAN OAK** - This design evokes the rustic and unyielding character of the old west. The embossing follows the long grain lines of the wood through all its years of growth, combined with the print to create a unique and dramatic effect.



**CORNETO** - The Coral texture of Corneto gives a beautifully smooth texture with a subtle natural stone effect.



**CRESCENT OAK** - Rich in depth and variation, the Crescent Oak emboss beautifully complements the reclaimed look of our XXL design. Leaving an authentic finish, even under the closest scrutiny.



## TECHNICAL DETAILS

ASPECTA® TEN is available in larger plank and tile formats, making it much easier and quicker to lay. Sizes available are:

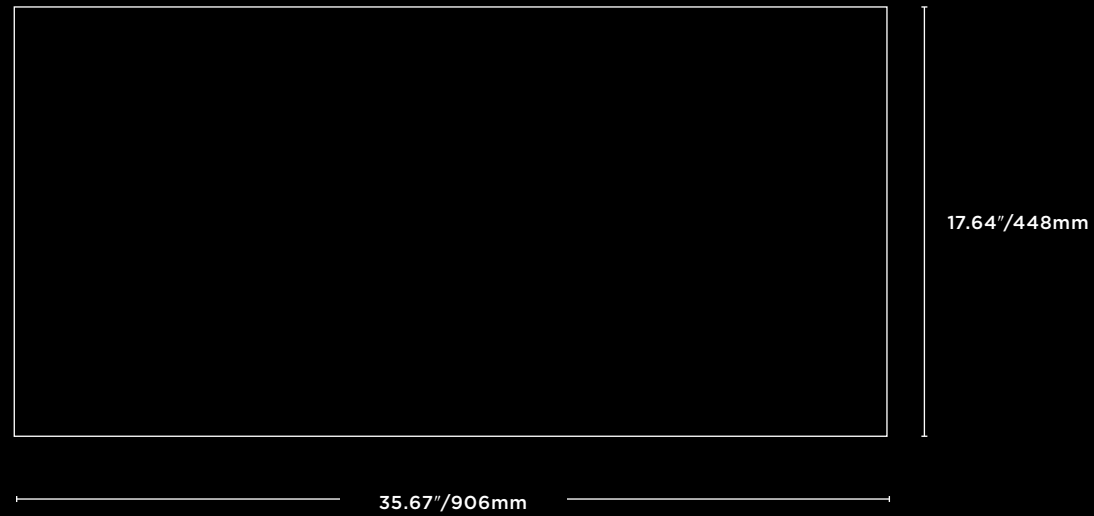
### XXL PLANK



### PLANK



### TILE



## TECHNICAL DATA



# TECHNICAL DATA SHEET - US

PHYSICAL PROPERTIES & PACKAGING (FLOATING MULTILAYER MODULAR FLOORING - 0.394" GAUGE/28MIL WEAR LAYER)			
<b>Construction</b> Extruded Vinyl Core Top Layer Pre-Attached Underlayment	5.0mm (0.197") ISOCORE Technology® 3.0mm (0.118") Luxury Vinyl Tile (LVT) 2.0mm (0.079") IXPE with Ultra-Fresh	5.0mm (0.197") ISOCORE Technology® 3.0mm (0.118") Luxury Vinyl Tile (LVT) 2.0mm (0.079") IXPE with Ultra-Fresh	5.0mm (0.197") ISOCORE Technology® 3.0mm (0.118") Luxury Vinyl Tile (LVT) 2.0mm (0.079") IXPE with Ultra-Fresh
<b>Use¹</b>	Commercial	Commercial	Commercial
<b>Size</b>	8.66" x 59.45" (220mm x 1510mm)	8.62" x 71.61" (219mm x 1819mm)	17.64" x 35.67" (448mm x 906mm)
<b>Wear Layer</b>	28mil (0.7mm)	28mil (0.7mm)	28mil (0.7mm)
<b>Edge Detail</b>	Micro-Bevel Edge	Micro-Bevel Edge	Micro-Bevel Edge
<b>Finish</b>	Urethane with Enhanced Ceramic Bead (ECB) & Ultra-Fresh	Urethane with Enhanced Ceramic Bead (ECB) & Ultra-Fresh	Urethane with Enhanced Ceramic Bead (ECB) & Ultra-Fresh
<b>Gauge</b>	10.0mm (0.394")	10.0mm (0.394")	10.0mm (0.394")
<b>Pieces/Cartron</b>	5	4	5
<b>Coverage/Piece</b>	3.576 Sq.Ft. (0.332 Sq.M.)	4.2875 Sq.Ft. (0.3975 Sq.M.)	4.374 Sq.Ft. (0.405 Sq.M.)
<b>Coverage/Cartron</b>	17.88 Sq.Ft. (1.66 Sq.M.)	17.15 Sq.Ft. (1.59 Sq.M.)	21.87 Sq.Ft. (2.025 Sq.M.)
<b>Coverage/Pallet</b>	36 Cartons/Pallet (643.68 Sq.Ft./59.76 Sq.M.)	64 Cartons/Pallet (1,097.6 Sq.Ft./101.76 Sq.M.)	30 Cartons/Pallet (656.1 Sq.Ft./60.75 Sq.M.)
<b>Coverage/Container</b>	30 Pallets/Container (19,310.4 Sq.Ft./1,792.8 Sq.M.)	15 Pallets/Container (16,464 Sq.Ft./1,526.4 Sq.M.)	29 Pallets/Container (19,026.9 Sq.Ft./1,761.75 Sq.M.)
<b>Aspecta® Ten Limited Commercial Warranty²</b>	Material: 25 Years (100%) Labor: 10 Years (Pro-Rated)	Material: 25 Years (100%) Labor: 10 Years (Pro-Rated)	Material: 25 Years (100%) Labor: 10 Years (Pro-Rated)
<b>FloorScore® Certificate No.</b>	SCS-FS-03808	SCS-FS-03333	SCS-FS-03808
<b>NSF/ANSI 332 Certificate No.</b>	SCS-RF-04041 (Gold Certification)	N/A (Not Certified)	SCS-RF-04041 (Gold Certification)

NORTH AMERICAN STANDARDS - SAFETY & PERFORMANCE			
Standard	Description	Requirements	Results
<b>ASTM E648</b>	Radiant Panel (Critical Radiant Flux)	Class I: ≥0.45 W/cm²	Passes Requirements
<b>ASTM E662</b>	Smoke Density	Flaming & Non-Flaming ≤450	Passes Requirements
<b>ASTM D2047</b>	Coefficient of Friction (Slip Resistance)	N/A	≥0.6 (Dry)
<b>ASTM F970</b>	Static Load Limit	±0.005", 250-Lbs. Load	≥650 LBS. (Surpasses Requirements)
<b>ASTM F2199</b>	Dimensional Stability	≤0.020"/Linear Foot	Surpasses Requirements
<b>ASTM F925</b>	Chemical Resistance	No more than "Slight Change"	Surpasses Requirements
<b>ASTM F1514</b>	Resistance to Heat	Average & Max ΔE <8.0	Surpasses Requirements
<b>ASTM F1515</b>	Resistance to Light	Average & Max ΔE <8.0	Surpasses Requirements
<b>ASTM G21³</b>	Antifungal Activity	N/A	Top: 1; Bottom: 0-1
<b>ASTM F963</b>	Heavy Metals	Refer to Standard	Passes Requirements
<b>ASTM F410</b>	Wear Layer Thickness	Commercial: ≥20mil (0.5mm)	Passes Requirements
<b>ASTM D4060⁴</b>	Abrasion Resistance	N/A	Average: 27,500 Cycles

NORTH AMERICAN STANDARDS - SOUND (TESTED OVER 6" CONCRETE SLAB WITH DROP-CEILING ASSEMBLY)			
Standard	Description	Requirements	Results
<b>ASTM E90 &amp; ASTM E413</b>	Airborne Sound Transmission Loss	Sound Transmission Class (STC) ≥50	STC 60 (Surpasses Requirements)
<b>ASTM E492 &amp; ASTM E989</b>	Impact Sound Transmission (Floor-Ceiling Assemblies)	Impact Insulation Class (IIC) ≥50	IIC 69 (Surpasses Requirements)

NALFA/ANSI STANDARDS (LF-01-2011) - PERFORMANCE						
Standard	Description	Class 1 (Residential)	Class 2 (Light Commercial)	Class 3 (Commercial)	Class 4 (Heavy Commercial)	Meets Requirements
<b>Section 3.2</b>	Thickness Swell	≤18%	≤16%	≤16%	≤12%	Classes 1-4
<b>Section 3.5⁵</b>	Large Ball IR	>800mm/31.5"	>1,000mm/39.4"	>1,200mm/47.3"	>1,400mm/55.1"	Classes 1-4
<b>Section 3.6⁵</b>	Small Ball IR	>200mm/7.9"	>200mm/7.9"	>350mm/13.8"	>500mm/19.7"	Classes 1-4
<b>Section 3.10</b>	Surface Bonding	1 N/mm²	1.25 N/mm²	1.25 N/mm²	1.5 N/mm²	Classes 1-4

NORTH AMERICAN STANDARDS - SUSTAINABILITY	
Standard	Description
<b>FloorScore® CHPS 01350 LEED EQ 4.3</b>	This product is FloorScore® Certified and has thus been found to comply with the volatile organic compound emissions criteria of the California Section 01350 standard. FloorScore® Certification can also be used as an alternative path to obtaining LEED EQ 4.3 credit.
<b>NSF/ANSI 332⁶</b>	This product is NSF/ANSI 332 Gold Certified and thus meets benchmark standards for social, environmental and economic sustainability as defined by the NSF/ANSI 332 standard. The assessment evaluated product design, product manufacturing, long-term value, end-of-life management, corporate governance, and innovation.






## FOOTNOTES



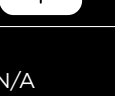








- Use:** Refer to Recommended Use PDF for Recommended Commercial Areas
- Aspecta® Ten Limited Commercial Warranty:** Please see full terms and conditions of our warranties at [www.aspecta flooring.com](http://www.aspecta flooring.com)
- ASTM G21:** Top Surface (LVT) scored 1 (Traces of Growth; <10% Growth); Bottom Surface (Underlayment) scored 0-1 (No Growth to Traces of Growth; 0-<10% Growth)
- ASTM D4060:** Results vary with emboss
- NALFA Sections 3.5 & 3.6:** Tests for Impact Resistance (IR)
- NSF/ANSI 332:** Aspecta® Ten carries NSF/ANSI 332 Gold Certification for all collections *except* the following: Crescent Oak



# TECHNICAL DATA SHEET - EU

PHYSICAL PROPERTIES & PACKAGING (FLOATING MULTILAYER MODULAR FLOORING - 10.0MM/0.70 MM)			
Construction Extruded Vinyl Core Top Layer Pre-Attached Underlayment	5.0mm (0.197") ISOCORE Technology® 3.0mm (0.118") Luxury Vinyl Tile (LVT) 2.0mm (0.079") IXPE with Ultra-Fresh	5.0mm (0.197") ISOCORE Technology® 3.0mm (0.118") Luxury Vinyl Tile (LVT) 2.0mm (0.079") IXPE with Ultra-Fresh	5.0mm (0.197") ISOCORE Technology® 3.0mm (0.118") Luxury Vinyl Tile (LVT) 2.0mm (0.079") IXPE with Ultra-Fresh
Use¹	Commercial	Commercial	Commercial
Size	220mm x 1510mm (8.66" x 59.45")	219mm x 1819mm (8.62" x 71.61")	448mm x 906mm (17.64" x 35.67")
Wear Layer	0.7mm (28mil)	0.7mm (28mil)	0.7mm (28mil)
Edge Detail	Micro-Bevel Edge	Micro-Bevel Edge	Micro-Bevel Edge
Finish	Urethane with Enhanced Ceramic Bead (ECB) & Ultra-Fresh	Urethane with Enhanced Ceramic Bead (ECB) & Ultra-Fresh	Urethane with Enhanced Ceramic Bead (ECB) & Ultra-Fresh
Thickness	10.0mm (0.394")	10.0mm (0.394")	10.0mm (0.394")
Mass per Unit Area	10.8kg/m²	10.8kg/m²	10.8kg/m²
Pieces/Carton	5	4	5
Coverage/Piece	0.332 Sq.M. (3.576 Sq.Ft.)	0.3975 Sq.M. (4.2875 Sq.Ft.)	0.405 Sq.M. (4.374 Sq.Ft.)
Coverage/Carton	1.66 Sq.M. (17.88 Sq.Ft.)	1.59 Sq.M. (17.15 Sq.Ft.)	2.025 Sq.M. (21.87 Sq.Ft.)
Coverage/Pallet	36 Cartons/Pallet (59.76 Sq.M./643.68 Sq.Ft.)	64 Cartons/Pallet (101.76 Sq.M./1,097.6 Sq.Ft.)	30 Cartons/Pallet (60.75 Sq.M./656.1 Sq.Ft.)
Coverage/Container	30 Pallets/Container (1,792.8 Sq.M./19,310.4 Sq.Ft.)	15 Pallets/Container (1,526.4 Sq.M./16,464 Sq.Ft.)	29 Pallets/Container (1,761.75 Sq.M./19,026.9 Sq.Ft.)
Aspecta® Ten Limited Commercial Warranty²	Material: 25 Years (100%) Labour: 10 Years (Pro-Rated)	Material: 25 Years (100%) Labour: 10 Years (Pro-Rated)	Material: 25 Years (100%) Labour: 10 Years (Pro-Rated)
FloorScore® Certificate No.	SCS-FS-03808	SCS-FS-03333	SCS-FS-03808
NSF/ANSI 332 Certificate No.	SCS-RF-04041 (Gold Certification)	N/A (Not Certified)	SCS-RF-04041 (Gold Certification)

EUROPEAN/INTERNATIONAL STANDARDS - CE CERTIFICATION/TESTING				
Description	Standard	Symbol	Requirements	Results
CE Certification	EN 14041		Refer to Standards Below	Refer to Results Below
Reaction to Fire (and Smoke Production)	EN 13501-1 EN ISO 9239-1 EN ISO 11925-2		<b>B<sub>fl</sub> - s1 Classification</b> Critical Flux: ≥8.0kW/m² Flame Spread: ≤150mm within 20s Smoke value as % x min: ≤750	Passes Requirements
Content of PCP (pentachlorophenol)	EN 14041		<5ppm	Passes Requirements
Formaldehyde Emission	EN 717-1		<b>Class E1:</b> Release ≤0.124mg/m³	Passes Requirements
Slip Resistance (Dry)	EN 13893		<b>Class DS:</b> Coefficient of Friction ≥0.30	Surpasses Requirements

EUROPEAN/INTERNATIONAL STANDARDS - MANUFACTURING & USAGE (EN 16511)				
Description	Standard	Symbol	Requirements	Results
Classification (Level of Use)	EN 16511 EN ISO 10874		Commercial - Very Heavy (Class 34) Refer to Standards Below	Passes Requirements (Refer to Results Below)
Wear Resistance IP, Method A	EN 13329, Annex E		≥4,000 cycles	Surpasses Requirements
Impact Resistance (Big Ball)	EN 13329+A1, Annex F		≥1800mm	Surpasses Requirements
Micro-Scratch Resistance [Class]³	EN 16094, Method B	N/A	≤MSR-B2	Passes/Surpasses (Results vary with collection)
Castor Chair Resistance	EN 425		After 25,000 cycles: No Disturbance to the Surface; No Delamination, Cracks, or Disruptions	Passes Requirements
Effect of Furniture Leg	EN 424		No Visible Damage	Passes Requirements
Residual Indentation	EN ISO 24343-1		≤0.15mm	Surpasses Requirements
Resistance to Staining [Grade, per Group]	EN 438-2 (Group 1 - Only 10 Minutes)		Groups 1 and 2: Grade 5 Group 3: Grade 4	Passes Requirements
Locking Strength	ISO 24334		Long Side ≥2.0kN/m Short Side ≥3.5kN/m	Surpasses Requirements
Dimensional Stability Due to Variation of Temperature	EN ISO 23999		≤0.25%	Surpasses Requirements
Thickness (t)	ISO 24337		$\Delta t_{avg} \leq 0.50\text{mm}$ (Versus Nominal) $t_{max} - t_{min} \leq 0.50\text{mm}$	Passes Requirements
Length (l)	ISO 24337		$l \leq 1500\text{mm}: \Delta l \leq 0.5\text{mm}$ $l > 1500\text{mm}: \Delta l \leq 0.3\text{mm}/\text{m}$ (Versus Nominal)	Passes Requirements
Width (w)			$\Delta w_{avg} \leq 0.10\text{mm}$ (Versus Nominal) $w_{max} - w_{min} \leq 0.20\text{mm}$	Passes Requirements
Squareness (q)			$q_{max} \leq 0.20\text{mm}$	Passes Requirements
Straightness (s)			$s_{max} \leq 0.30\text{mm}/\text{m}$	Passes Requirements



## TECHNICAL DATA SHEET - EU

EUROPEAN/INTERNATIONAL STANDARDS - MANUFACTURING & USAGE (EN 16511) - <i>continued</i>				
Description	Standard	Symbol	Requirements	Results
Flatness ( <i>f</i> )	ISO 24337	N/A	Maximum Single Values: $f_{w,concave} \leq 0.15\%$ , $f_{w,convex} \leq 0.20\%$ $f_{l,concave} \leq 0.50\%$ , $f_{l,convex} \leq 1.00\%$	Passes Requirements
Openings ( <i>o</i> )	ISO 24337	N/A	Measured from the Surface Between Vertical, Contacting Edges $o_{avg} \leq 0.15\text{mm}$ , $o_{max} \leq 0.20\text{mm}$	Passes Requirements
Height Difference ( <i>h</i> )	ISO 24337	N/A	$h_{avg} \leq 0.10\text{mm}$ $h_{max} \leq 0.15\text{mm}$	Passes Requirements

EUROPEAN/INTERNATIONAL STANDARDS - AUXILIARY PERFORMANCE & SAFETY				
Description	Standard	Symbol	Requirements	Results
Slip Resistance (Wet) <sup>4</sup>	DIN 51130	N/A	Grade R10: $\geq 10^\circ$ and $< 19^\circ$	Passes/Surpasses (Except Crescent Oak Collection)
Slip Resistance (Australia/New Zealand)	AS 4586	N/A	<b>Wet Pendulum (Slider 96)</b> P3: 35-44 SRV <b>Oil-Wet Inclining Platform</b> Grade R10: $\geq 10^\circ$ and $< 19^\circ$	Passes/Surpasses Requirements
Cooling Phase - Shrinkage (23°C to 5°C)	N/A	N/A	N/A	Dimensional Stability: $\leq 0.05\%$ Curling: $\leq 0.7\text{mm}$
Heating Phase - Expansion (23°C to 40°C)	N/A	N/A	N/A	Dimensional Stability: $\leq 0.05\%$ Curling: $\leq 0.7\text{mm}$
Thermal Resistance	EN 12664		N/A	0.09600 to 0.09820 m <sup>2</sup> K/W at 10°C
Static Electrical Propensity	EN 1815, Method A		N/A	Average, Crescent Oak: -2.7kV Average, Other Products: -11.0kV
Impact Sound Insulation <sup>5</sup>	EN ISO 10140-3 ISO 717-2 EN ISO 140-8		N/A	$\Delta L_w = 18\text{dB}$
Product-Content Safety	REACH SVHC 168	N/A	Refer to Standard	Passes Requirements

STANDARDS - SUSTAINABILITY	
Standard	Description
FloorScore® CHPS 01350 LEED EQ 4.3	This product is FloorScore® Certified and has thus been found to comply with the volatile organic compound emissions criteria of the California Section 01350 standard. FloorScore® Certification can also be used as an alternative path to obtaining LEED EQ 4.3 credit.
NSF/ANSI 332 <sup>6</sup>	This product is NSF/ANSI 332 Gold Certified and thus meets benchmark standards for social, environmental and economic sustainability as defined by the NSF/ANSI 332 standard. The assessment evaluated product design, product manufacturing, long-term value, end-of-life management, corporate governance, and innovation.

### FOOTNOTES

- 1) **Use:** Refer to Recommended Use PDF for Recommended Commercial Areas
- 2) **Aspecta® Ten Limited Commercial Warranty:** Please see full terms and conditions of our warranties at [www.aspecta flooring.com](http://www.aspecta flooring.com)
- 3) **Micro-Scratch Resistance [Class] (EN 16094, Method B):** Results vary with collection. MSR-B2: Crescent Oak; MSR-B1: Brindle Oak, Corneto, Fulton Hyde, Runyon Oak, Tally Oak, Tanley Hall, Urban Grid
- 4) **Slip Resistance-Wet (DIN 51130):** Results vary with collection. *Grade R9:* Crescent Oak; *Grade R10:* Brindle Oak, Corneto, Fulton Hyde, Runyon Oak, Tally Oak, Tanley Hall, Urban Grid
- 5) **Impact Sound Insulation (EN ISO 10140-3, ISO 717-2, EN ISO 140-8):**  $\Delta L_w$  = Weighted Reduction of Impact Sound Pressure Level
- 6) **NSF/ANSI 332:** Aspecta® Ten carries NSF/ANSI 332 Gold Certification for all collections *except* the following: Crescent Oak